

PERFORMANCE

These feeds are designed specifically to help ensure peak performance of horses in training. They contain various energy sources to ensure workload requirements are met.

Equine High Performance Textured Ration

- provides highly digestible energy sources to maintain critical body condition and energy reserves
- provides essential readily fermentable fibre
- controls lactate production in the heavily worked horse
- replenishes nutrients lost in intense work

Equine Extruded High Performance Ration

- increased energy density from fat sources for improved athletic performance, body condition and appearance

FEEDING DIRECTIONS

LIGHTLY WORKED HORSES & SHOW HORSES

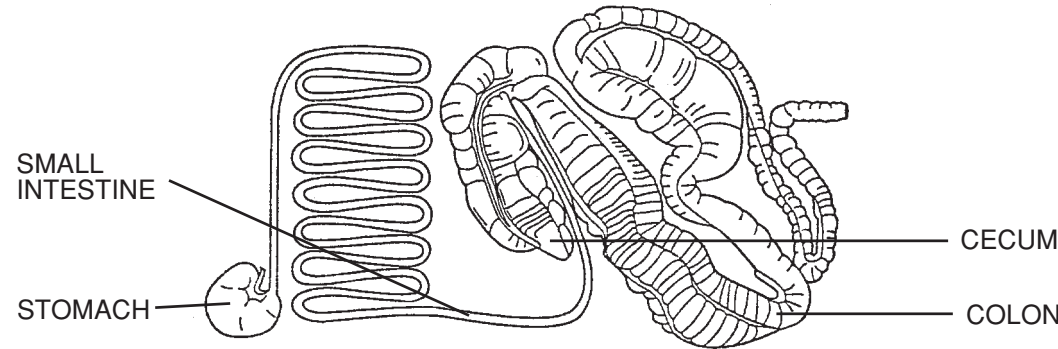
- Feed to show horses in light work at 2.5 - 4 kg per day along with at least 1% body weight per day as hay and/or pasture. Concentrate and hay intakes may be varied to account for individual variation in body condition. Horses in light work include western pleasure horses, english pleasure, bridle path hack, equitation, etc.

MODERATELY WORKED HORSES - Feed 4-6 kg per day. Adjustments in feed and forage intake should be made as for horses in light work. Remember to feed hay or good quality pasture at a minimum of 1% of body weight per day. Examples of horses in moderate work include ranch horses, roping horses, barrel horses, jumping and cutting horses.

HEAVILY WORKED HORSES - Feed 5-6 kg per day and an equivalent amount of good quality hay and/or pasture. Examples of horses in heavy work include race horses, polo ponies, and three day event horses.

THE HORSE'S DIGESTIVE TRACT

The Horse is a monogastric herbivore - a simple stomached animal which has developed the ability to utilize forages. The unusual nature of this digestive system necessitates different feed programs designed for growth, reproduction and activity.



SUCKLING FOALS & WEANLINGS

These feeds are formulated specifically to meet the nutritional needs of the growing horse up to 12 months of age, ensuring optimum growth. Nutrient requirements are balanced to minimize skeletal disorders which may be related to Developmental Orthopedic Disease (D.O.D.).

Equine Pelleted Foal Ration

- a pelleted feed
- ensures optimum amounts of the necessary minerals, vitamins and protein

Equine Extruded Foal Ration

- can be fed free choice as a creep ration
- improved digestibility
- improved regulation of feed intake

FEEDING DIRECTIONS

MATURE WEIGHT OF HORSE(kg)		400	500	600
TYPE OF HORSE	AGE	kg FEED PER DAY		
Nursing Foals	1-5 mo.	Maximum of .5 kg per mo. of age		
Weanlings	6-8 mo.	1.5-2.0	2.0-2.5	2.5-3.0
Weanlings	8-12 mo.	2.5-3.0	3.0-3.5	3.5-4.0

BROODMARES & YEARLINGS

These feeds are designed to meet the requirements of the broodmare in late gestation and lactation, as well as that required by growing horses over 8 months of age or 350 kg body weight.

Equine 16% Sweet Horse Feed

- premium quality sweet feed
- palatable for optimum uptake

Equine Extruded Broodmare/Yearling Ration

- increased digestibility
- improved regulation of feed intake

FEEDING DIRECTIONS

MATURE WEIGHT OF HORSE(kg)		400	500	600
TYPE OF MARE	AGE(yrs)	kg FEED PER DAY		
Barren/Early Pregnant	3+	1.5-2.5	1.5-3.0	2.5-3.5
Late Pregnant	3+	3.0-4.0	3.0-4.0	4.0-5.0
Lactating	3+	4.5-6.5	5.0-7.0	5.5-7.5
Yearlings	12mo.	3.5-5.5	4.0-6.0	4.0-6.5
2 Yr. Olds	2	4.0-6.0	4.0-6.0	4.5-6.5

MAINTENANCE

These feeds are designed for idle or lightly exercised adult horses, ponies and barren mares. High levels of fibre are incorporated in the feeds while maintaining complete balanced nutrient levels.

Equine Pelleted Mature Horse Ration

- high fibre, low grain formulation
- maintains weight and body condition for all classes of horses
- to be fed in combination with hay

FEEDING DIRECTIONS

MATURE WEIGHT OF HORSE(kg)		400	500	600
TYPE OF MARE	AGE(yrs)	kg FEED PER DAY		
Mature Idle Horses	3+	1.5-2.5	2.0-3.0	2.5-3.5
Lightly Used Pleasure Horses	3+	2.0-2.5	2.5-3.0	2.5-3.5
Broodmares	3+	1.5-2.5	1.5-3.0	2.5-3.5

Equine Pelleted All-in-One Ration

- can be the sole feed component of the daily ration to provide all essential roughage and nutrient requirements
- provides dust free complete feed for horses with respiratory conditions
- mixes well with grains, sweet feeds and pellets

Feed pelleted All-in-One ration as the sole ration according to the following table.

FEEDING DIRECTIONS

MATURE WEIGHT OF HORSE (kg)		400	500	600
TYPE OF HORSE	AGE(yrs)	kg FEED PER DAY		
Broodmare	(barren)	6.0	7.5	9.0
	(last 90 days)	7.0	9.0	10.5
	(lactation)	10	12.5	15.0
Show Horses	(light work)	8.0	10	12.0
	(moderate work)	9.0	11.5	13.5
	(heavy work)	10.0	12.5	15.0

Equine 13% Sweet Horse Feed

- is a complete balanced ration designed to meet the nutritional requirements of growing horses over 300kg, show horses engaged in light to moderate work and the mature horse at maintenance.

FEEDING DIRECTIONS

Feed at a rate of .5 to 1.5% of body weight depending on horse condition and level of activity.

Equine Pelleted Fat 'N' Fibre Horse Ration

- formulated to be fed to all classes of mature horses with a dietary requirement for increased levels of fat and fibre
- contains a high level of fat to provide energy for all classes of mature horses at work
- high fibre content from forage products serves to reduce hay intake and avoid dust, while maintaining proper digestive function
- pelleted form reduces dust for horses with respiratory conditions
- yeast enhanced to encourage maximum feed utilization while decreasing digestive upsets

FEEDING DIRECTIONS

MATURE WEIGHT OF HORSE(kg)		400	500	600
TYPE OF HORSE	AGE(yrs)	kg FEED PER DAY		
Mature Idle Horse	3+	1.5-2.5	1.5-3.0	2.5-3.5
Lightly Used Pleasure Horse	3+	2.5-3.5	2.5-4.0	3.5-4.5
Brood Mares	3+	3.0-4.0	3.0-4.5	4.0-5.0
Performance Horse (light work)		3.2-3.5	4.2-4.4	5.1-5.3
	(moderate work)	4.2-4.5	5.2-5.4	6.1-6.3
	(heavy work)	5.2-5.5	6.2-6.4	7.1-7.3

- Feed with hay , feed at a rate of 0.5 to 1.5% of body weight depending on horses condition and level of activity.

- Feed in conjunction with quality hay, salt and water.

- Individual metabolism rates may require a 10-15% deviation.

Equine Pelleted Senior Care Ration

14% Senior Care Ration is formulated to be fed to Senior Horses, over the age of 18 years to provide total nutrition allowing for the older horse's reduced metabolic function.

- complete and balanced diet
- elevated levels of fibre and processed grains for increased digestibility
- contains soybean oil for improved fat and energy digestibility
- additional vitamin C and B fortification
- enhanced bioavailability of organic minerals
- added yeast for increased feed utilization
- pelleted for convenience and reduced dust

FEEDING DIRECTIONS

MATURE WEIGHT OF HORSE(kg)		400	500	600
TYPE OF HORSE	AGE(yrs)	kg FEED PER DAY		
Mature Idle Horse	18+	1.7-2.8	2.3-3.4	2.8-4.0
Lightly Used Pleasure Horse	18+	2.3-2.8	2.8-3.4	2.8-4.0
Brood Mares	18+	1.7-2.8	1.7-3.4	2.8-4.0

- Feed in conjunction with quality hay, salt and water.

- Individual metabolism rates may require a 10-15% deviation.

EQUILINE HORSE MINERAL

- Can be used as a mineral supplement to balance mixed grass /legume hays as well as high legume hays.
- Provides optimum electrolyte balance for horses.
- Provides all the vitamins necessary for maintenance, performance and hoof integrity.
- Highly palatable to encourage consumption.

FEEDING DIRECTIONS

Equiline Horse Mineral is to be fed at a rate of 20 grams per 100 kilograms of body weight. **Equiline Horse Mineral** can also be mixed with grains at a rate of 40 grams per kilogram of grain mix. Feed grain mix including mineral at a rate of .5% -1.5% of body weight depending upon level activity. **Equiline Horse Mineral** may be offered free-choice with complete Equiline Extruded, Pelleted or Textured Ration. Always follow feeding directions on the label.

EQUILINE EXTRA

4 Kilogram Pail
PELLETS FOR HORSES

Vitamin-Trace Mineral Premix for high performance horses. For supplemental top dressing on the regular daily ration of working horses and horses under stress. It is NOT a substitute or replacement for the regular SHUR-GAIN horse feeding program. SHUR-GAIN "Equiline Extra" contains biotin and a chelated zinc source for improved feed intake and increased fibre digestion.

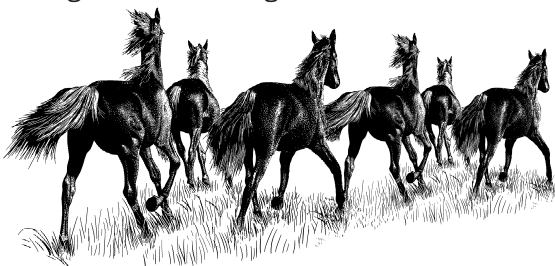
GUARANTEED ANALYSIS

Per/kg		Per/kg	
Vitamin A, I.U.-(min.) ...	322,500	Niacin, mg. -(min.)	3,200
Vitamin D3, I.U. -(min.)..	45,000	Choline, mg. -(min.)	36,000
Vitamin E, I.U. -(min.)	8,000	Pantothenic Acid, mg. -(min.)	3,000
Vitamin B12, mcg. -(min.)	2,270	Zinc, mg. -(act.)	4,800
Vitamin K, mg. -(min.)	120	Iron, mg. -(act.)	9,000
Biotin, mg. -(min.)	15	Iodine, mg. -(act.)	0
Thiamine, mg. -(min.)	530	Copper, mg. -(act.)	1,300
Pyridoxine, mg. -(min.)	200	Manganese, mg. -(act.) ...	4,000
Riboflavin, mg. -(min.)	500	Cobalt, mg. -(act.)	25

DAILY AMOUNT OF "EQUILINE EXTRA"

Body Weight				
Kg	lb.	(g)	(oz.)	Scoops
250	550	37.5	1.3	1
500	1,100	75.0	2.7	2
750	1,650	112.5	4.0	3
1,000	2,205	150.0	5.4	4

Pregnant or Lactating Mares - Double rate



NOTES



Visit your **SHUR-GAIN**
Feed Service Centre today!

we understand nutrition & health

SHUR-GAIN

EQUILINE

Horse Feed

*For All Stages
of Your Horse's Life*



- PERFORMANCE
- FOAL
- BROODMARE
- YEARLING
- MAINTENANCE



Equiline Feed Specifications



	Crude Protein (min.)%	Crude Fat (min.)%	Crude Fibre (max.)%	Calcium (act.)%	Phosphorous (act.)%	Sodium (act.)%	Vitamin A I.U./kg(min.)	Vitamin D I.U./kg(min.)	Vitamin E I.U.kg(min.)
--	-----------------------	-------------------	---------------------	-----------------	---------------------	----------------	-------------------------	-------------------------	------------------------

FOALS

Equiline Pelleted Foal Ration	18	4.0	6.0	1.0	0.8	0.4	13,000	1,650	130
Equiline Extruded Foal Ration	18	4.0	6.0	1.0	0.8	0.4	13,000	1,650	130

BROODMARE/YEARLINGS

Equiline Extruded Broodmare/Yearling Ration	16	4.0	6.0	0.85	0.7	0.4	11,000	1,400	100
Equiline 16% Sweet Feed	16	3.3	6.0	0.95	0.65	0.4	11,000	1,400	100

PERFORMANCE

Equiline Extruded High Performance	13	6.0	6.0	0.85	0.7	0.4	11,000	1,400	150
Equiline Textured High Performance	13	6.0	9.0	0.85	0.7	0.4	11,000	1,400	150

MAINTENANCE

Equiline Pelleted Mature Horse Ration	12	3.0	20.0	0.8	0.6	0.4	11,000	1,400	100
Equiline All-In-One Ration Pellets	12	3.0	20.0	0.8	0.55	0.25	5,500	700	50
Equiline Pelleted Fat 'N' Fibre Ration	13	6.5	25.0	0.65	0.45	0.4	11,000	1,400	220
Equiline Senior Care Ration	14	4.0	17.0	0.60	0.50	0.4	11,440	1,490	100
Equiline 13% Sweet Feed	13	3.4	6.0	0.83	0.60	0.4	11,000	1,400	100

SUPPLEMENTS

Equiline High Performance 30% Horse Supp (200)	30	1.5	7.0	3.6	2.55	1.85	55,000	7,000	750
SHUR-GAIN 22% Horse Supp (250)	22	4.0	6.0	3.0	1.55	1.55	44,000	5,600	400

MINERAL

Equiline Horse Mineral	-	-	-	12	12	7	276,000	35,700	2,500
------------------------	---	---	---	----	----	---	---------	--------	-------

All Equiline Horse Feeds are formulated with the finest quality ingredients. Grain, Protein, Macro & Micro Minerals, Vitamins & Yeast Culture are all balanced for maximum digestibility & enhanced feed utilization. Available as an extruded ration, pelleted ration and our traditional sweet feed ration.